



Conferences

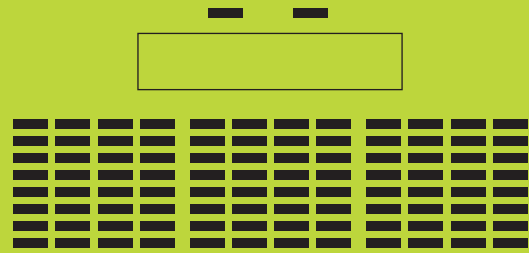
	Cedar Suite	Oak Suite	Maple Suite	Garden Suite*	Sandon Room	Wedgewood Room	Knights Suite	Queens Suite	Kings Suite	Royal Suite*
Length (ft/mtrs)	36.6/11.6	47/14.3	32/9.8	47/14.3	32.5/9.8	30/9.14	26/7.9	25.8/8.0	25.8/8	51.6/16
Width (ft/mtrs)	21/6.4	44/13.4	19/5.8	84/25.6	19/5.8	25/7.62	26.6/8.10	32/9.7	32/9.7	32/9.7
Height (ft/mtrs)	7.5/2.28	7.5/2.28	7.5/2.28	7.5/2.28	7.5/2.28	9.4/2.68	8.20/2.5	10.23/3.1	10.23/3.1	10.23/3.1
Area (ft/mtrs)	768.6/74.24	2068/191.62	608/56.84	2836/265.86	617/5.56	750/69.5	691.6/63.99	852.6/77.6	852.6/77.6	1651/152
Theatre	50	250	50	300	60	75	60	75	75	200
Classroom	36	160	36	196	26	40	26	40	40	80
Boardroom	28	60	28	80	28	34	28	35	35	70
U-Shape	24	100	24	100	24	34	24	35	35	65
Banquet	40	200	40	250	40	50	40	60	60	160
Cabaret	36	160	36	180	36	36	36	40	40	120
Air Conditioning				●	●	●	●	●	●	●
Natural Daylight	●	●	●	●	●	●		●	●	●
Floor level	Ground	Ground	Ground	Ground	Ground	First Floor	Ground	Ground	Ground	Ground
built-in Pa System	●	●		●				●	●	●

* Garden Suite comprises of the cedar and oak suite

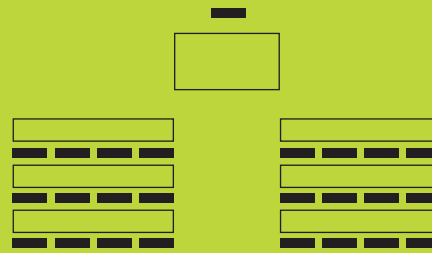
Air conditioning in every room

* Royal suite comprises of the Kings, Queens and Princes suites

Typical room layouts



Theatre



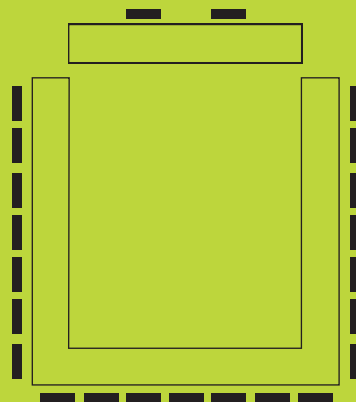
Classroom



Boardroom



Banquet



U- Shape



Cabaret

Above are a choice of room layouts for your conference or event.
If you require any other configuration of room layout our events team will
be pleased to help you.